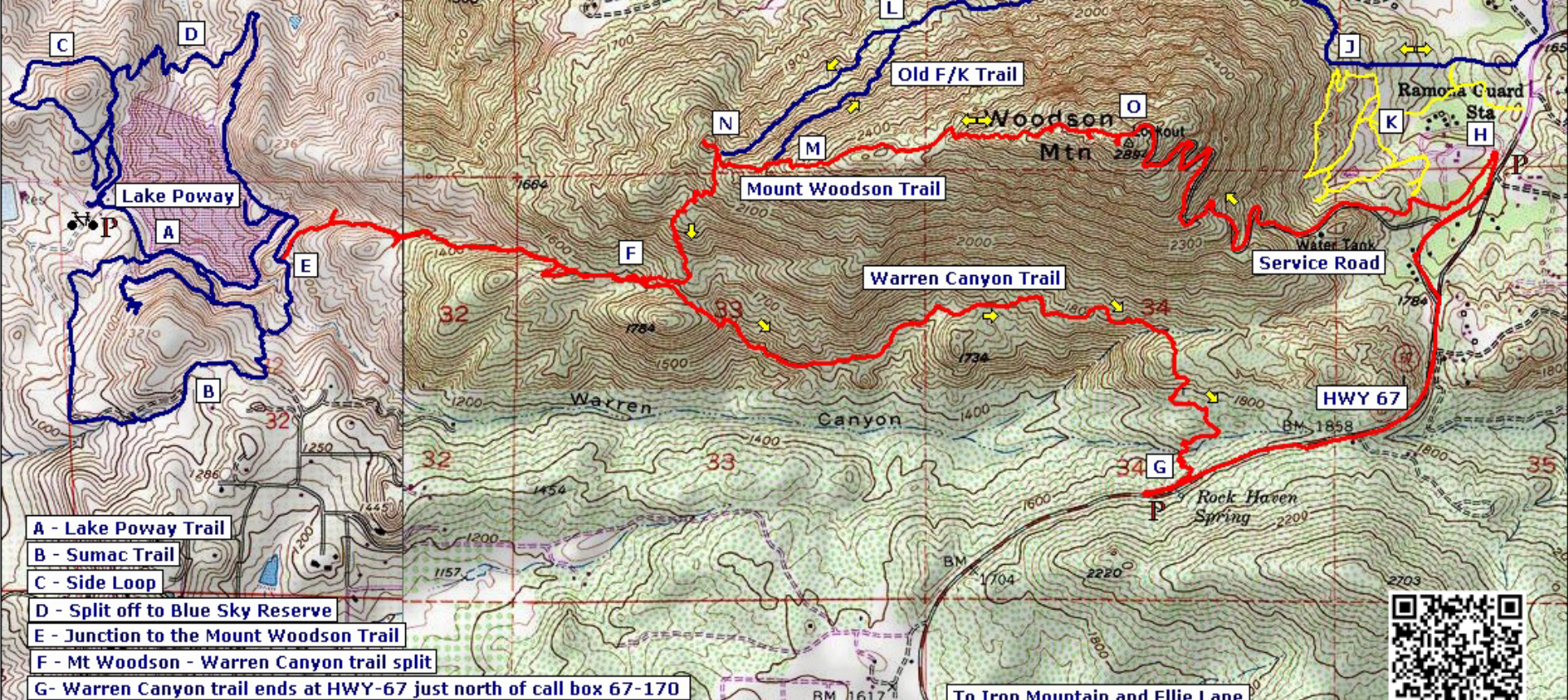


- H - Ramona Guard Station - Service Road Entrance**
- I - Parking on side of road at Archie Moore Road and Rancho De La Angel**
- J - Top/End of the Residential portion of the Fry-Koegle Trail**
- K - Network of "social" trails and fireroads to get to Point J**
- L - Lower Split of the Old and New Fry-Koegle Trails**
- M - Old Fry-Koegle and Mt Woodson trail junction (unsigned)**
- N - Junction of Fry Koegle and Mount Woodson Trails. Junction with a viewpoint trail as well.**
- O - The Top - 2,894 Feet**



- A - Lake Poway Trail**
- B - Sumac Trail**
- C - Side Loop**
- D - Split off to Blue Sky Reserve**
- E - Junction to the Mount Woodson Trail**
- F - Mt Woodson - Warren Canyon trail split**
- G - Warren Canyon trail ends at HWY-67 just north of call box 67-170**

To Iron Mountain and Ellie Lane
1 Mile from Point G

Map created with **TOPOLIC** ©2006 National Geographic

